



**SPRAYER VALVES & CONTROLS CATALOG** | **NO. 37**

**YOUR WORK DEMANDS CONTROL.  
OURS GUARANTEES IT.**

# 3 EASY WAYS TO ORDER

1 ONLINE // [SPRAYERVALVES.COM/FINDADEALER](https://sprayervalves.com/findadealer)

2 PHONE // 254.982.4236

3 FAX // 254.982.4836

## PRICING & TERMS

Accounts and terms are available for firms with approved credit.  
All prices are F.O.B. Academy, TX.  
Prices and specifications are subject to change without notice.

## LIMITED WARRANTY

Texas Industrial Remcor, Inc. guarantees that this product shall be free from defects in workmanship, under normal usage, for a period of 90 days from the date of original purchase. Defective units or parts should be returned to the factory with transportation prepaid. If inspection shows them to be defective, they will be repaired or replaced without charge. The use of pipe dope could void warranty. Texas Industrial Remcor, Inc. assumes no liability for consequential damages.

# PART NUMBER ABBREVIATION KEY

PREFIX	DESCRIPTION
ADPTR	Adaptor
BKT	Bracket
CBL	Cable
CL	Coil
CLMP	Clamp
CON	Control System
CPL	Control Panel
EC	Electrical Component
HRN	Harness
ISO	Isolator
KT	Kit
MNV	Manual Valve
MTR	Motor
MV	Motorized Valve

NB	Nozzle Body Valve
NUT	Nut
OR	O-Ring
PG	Pressure Gauge
PIN	Pin
PIP	Pipe
PL	Plastic Component/Part
PLG	Plug
PLGR	Plunger
PR	Pressure Regulator
RD	Rod
SCR	Screw
SL	Seal
SP	Spring
SV	Solenoid Valve

SW	Switch
TBG	Tubing
VB	Valve Body
VRBA	Valve, Regulator, Bracket Assembly
WR	Wire
WSR	Washer

SUFFIX	DESCRIPTION
C	TIR E-Chip™
EMI	Electro Magnetic Interference
F	Flanged
L	Liquid-Filled
NPR	No Pressure Regulator
WP	Weather Pack Connectors

## PART NUMBER IDENTIFIER // XXXX . 1234 . X . XYZ

XXXX // Product Group  
12 // Product Series

34 // Product Model  
X // Number of Valves Banked

XYZ // Additional Features

# PRINTED IN THE LAB. PROVEN IN THE FIELD.



## PURCHASE 3-D PRINTING TIME

TIR's precision 3-D printing service can custom-make any piece your setup requires, from one-offs to large quantities of parts. Simply provide a CAD file, and we'll take care of the rest.

Printed pieces, no machining required. >>



### FAST & AFFORDABLE

Continuous printing and fast cooling allow us to produce parts up to 10x faster than other 3-D solutions. Cost-efficient materials help keep prices low.

### SUPERIOR, RELIABLE QUALITY

Excellent dimensional accuracy guarantees precise, consistent performance. And our PA12 (engineering specifications similar to Nylon66) material ensures every part is heat and freeze resistant.

**CONTACT US // 254.982.4236**

Pricing is based on quantity and weight. Give us a call to discuss a solution we can custom-fit for you.



# TABLE OF CONTENTS

## CONTROL SYSTEMS

- 6 RC-1B SPRAYER CONTROL SYSTEMS OVERVIEW
- 7 RC-1B SPRAYER CONTROL SYSTEMS BREAKDOWN
- 8 RC-2 SPRAYER CONTROL SYSTEMS OVERVIEW
- 9 RC-2 SPRAYER CONTROL SYSTEMS BREAKDOWN
- 10 RC-10N SPRAYER CONTROL SYSTEMS OVERVIEW
- 11 RC-10N SPRAYER CONTROL SYSTEMS BREAKDOWN
- 12 RC-3 CONTROL SYSTEMS OVERVIEW
- 13 RC-3 CONTROL SYSTEMS BREAKDOWN
- 14 PRESSURE REGULATORS

## HARNESSES

- 16 SPRAYER HARNESSES
- 17 CAB & EXTENSION HARNESSES
- 18 AMP 3-PIN POWER PLUG

## VALVES

- 20 PILOT VALVE
- 22 SOLENOIDS FOR HIGH FLOWS
- 23 SOLENOIDS FOR LOW-MED FLOWS
- 24 SMALL SOLENOID VALVES
- 25 3-WAY SOLENOID VALVES
- 26 NOZZLE BODY VALVES
- 27 MANIFOLD VALVES 102
- 28 PUSH-TO-CONNECT VALVES
- 30 TIR E-CHIP VALVES
- 32 MANUAL VALVE

## ELECTRIC & MOTORIZED VALVES

- 34 2-WAY MOTORIZED VALVES
- 35 3-WAY MOTORIZED VALVES
- 36 ELECTRIC BALL VALVES

## ACCESSORIES

- 38 REPAIR KITS
- 39 VRBAS
  - COILS
- 40 CHEMICAL ISOLATORS
  - MOUNTING BRACKETS
- 41 CABLE ADAPTORS
  - SWITCH & WIRE
- 42 PRESSURE GAUGES
  - PRESSURE ADAPTORS
  - PIPES
  - PIPE PLUGS
  - CLAMPS

# 1 // CONTROL SYSTEMS

Whatever your application or output needs, our precision control systems help you own every detail of the work at hand. From single to multiple boom outputs, our systems deliver smart, robust solutions that refuse to let you down.



# RC-1B SERIES CONTROL SYSTEMS

GAUGED | REMOTE CONTROL | 2-5 BOOM OUTPUTS

Standard configuration of RC-1B Sprayer Control System pictured. Custom configurations available. All configurations available with up to 5 boom sections.



**CONTROL PANEL**  
CPL.1987



**PRESSURE REGULATOR**  
PR.1560B

**SPRAYER CONTROL HARNESS**  
HRN.1576.WP



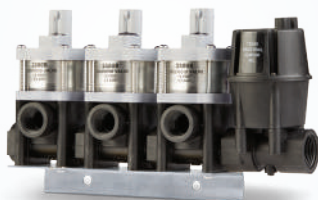
## VALVE, REGULATOR AND MOUNTING BRACKET ASSEMBLIES



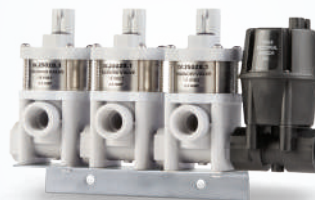
**VRBA.2020.WP**  
3 1999A Weather Pack Valves  
1541B Pressure Regulator | 1990 Bracket



**VRBA.2195.WP**  
3 2100C Weather Pack Valves  
1560B Pressure Regulator | 2151 Bracket



**VRBA.2512.WP**  
3 2500B Weather Pack Valves  
1560B Pressure Regulator | 2151 Bracket



**VRBA.2070.WP**  
3 2502B Weather Pack Valves  
1560B Pressure Regulator | 2151 Bracket



Get total control from the tractor seat in a complete, turnkey package. The cab harness of the control console attaches to the sprayer harness with quick disconnects for easy coupling of the sprayer to the tractor. The RC-1B Series is a robust, 12-Volt system for 2-5 boom sections with pressure gauge feedback.

CON.RC1B.WP



No Solenoid Valves included

CON.2040.WP.3



Includes 1999A Solenoid Valves for 18 GPM and up to 175 PSI

CON.2155.WP.3



Includes 2100C Solenoid Valves for 10 GPM and up to 125 PSI

CON.2380.WP.3



Includes 2500B Solenoid Valves for 10 GPM and up to 100 PSI

CON.2480.WP.3



Includes 2502B Solenoid Valves for 8 GPM and up to 175 PSI

CON.2460.WP.3



No Motorized Valves included

SPECS	CON.RC1B.WP	CON.2040.WP.3	CON.2155.WP.3	CON.2380.WP.3	CON.2480.WP.3	CON.2460.WP.3
REMOTE CONTROL PANEL ASSEMBLY WITH 3 BOOM SWITCHES, PRESSURE REGULATOR CONTROL SWITCH AND MASTER CONTROL SWITCH	X	X	X	X	X	X
0-100 PSI/689 KPA PRESSURE GAUGE	X		X	X		
0-160 PSI/1103 KPA PRESSURE GAUGE						X
0-200 PSI/1378 KPA PRESSURE GAUGE		X			X	
6' CAB HARNESS	X	X	X	X	X	
10' CAB HARNESS						X
8' POWER CORD	X	X	X	X	X	X
8' SPRAYER HARNESS	X	X	X	X	X	
10' SPRAYER HARNESS						X
3-VALVE BANK ASSEMBLY		X	X	X	X	
VALVE MOUNTING BRACKET		X	X	X	X	
.75" PRESSURE REGULATOR	X		X	X	X	
1" PRESSURE REGULATOR		X				X
WEATHER PACK CONNECTORS	X	X	X	X	X	X
.75" PRESSURE ADAPTOR			X	X	X	
1" PRESSURE ADAPTOR		X				
1" NYLON NIPPLE						X

System Harness to Valve hook-up schematic: blue-left, brown-middle, black-right. Green and yellow regulator power wires are not positive/negative specific.

# RC-2 SERIES CONTROL SYSTEMS

GAUGELESS | REMOTE CONTROL | 2-5 BOOM OUTPUTS

Standard configuration of RC-2 Sprayer Control System pictured. Custom configurations available.



**CONTROL PANEL**  
CPL.1985

**SPRAYER CONTROL HARNESS**  
HRN.1576.WP



## VALVE, REGULATOR AND MOUNTING BRACKET ASSEMBLIES



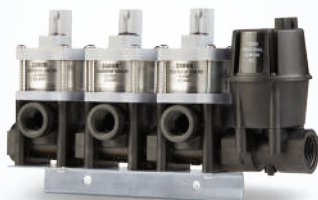
**VRBA.2020.WP**

3 1999A Weather Pack Valves  
1541B Pressure Regulator | 1990 Bracket



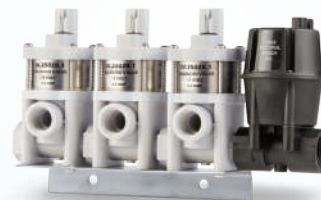
**VRBA.2195.WP**

3 2100C Weather Pack Valves  
1560B Pressure Regulator | 2151 Bracket



**VRBA.2512.WP**

3 2500B Weather Pack Valves  
1560B Pressure Regulator | 2151 Bracket



**VRBA.2070.WP**

3 2502B Weather Pack Valves  
1560B Pressure Regulator | 2151 Bracket



The RC-2 Series is completely turnkey, allowing for quick and convenient mounting to the sprayer. Like the RC-1B, this Series gives you total remote control over a 12-Volt system for 2-5 boom sections. Additionally, the RC-2 Series package allows the mobilization of a Pressure Gauge to be located wherever it suits your application needs.

CON.RC2.WP



No Solenoid Valves included

CON.1616.WP.3



Includes 1999A Solenoid Valves  
for 18 GPM and up to 175 PSI

CON.1617.WP.3



Includes 2100C Solenoid Valves  
for 10 GPM and up to 125 PSI

CON.1618.WP.3



Includes 2500B Solenoid Valves  
for 10 GPM and up to 100 PSI

CON.1619.WP.3



Includes 2502B Solenoid Valves  
for 8 GPM and up to 175 PSI

CON.1609.WP.3



No Motorized Valves included

SPECS	CON.RC2.WP	CON.1616.WP.3	CON.1617.WP.3	CON.1618.WP.3	CON.1619.WP.3	CON.1609.WP.3
REMOTE CONTROL PANEL ASSEMBLY WITH 3 BOOM SWITCHES AND MASTER CONTROL SWITCH	X	X	X	X	X	X
PRESSURE REGULATOR CONTROL SWITCH IN PANEL		X	X	X	X	
6' CAB HARNESS	X	X	X	X	X	
10' CAB HARNESS						X
8' POWER CORD	X	X	X	X	X	X
8' SPRAYER HARNESS	X	X	X	X	X	
10' SPRAYER HARNESS						X
3-VALVE BANK ASSEMBLY		X	X	X	X	
VALVE MOUNTING BRACKET		X	X	X	X	
.75" PRESSURE REGULATOR			X	X	X	
1" PRESSURE REGULATOR		X				
WEATHER PACK CONNECTORS	X	X	X	X	X	X
.75" PRESSURE ADAPTOR			X	X	X	
1" PRESSURE ADAPTOR		X				
1" NYLON NIPPLE						X

System Harness to Valve hook-up schematic: blue-left, brown-middle, black-right. Green and yellow regulator power wires are not positive/negative specific.

# RC-10N SERIES CONTROL SYSTEMS

GAUGED | REMOTE CONTROL | 1 BOOM OUTPUT

Standard configuration of RC-10N Sprayer Control System pictured. Custom configurations available.



**CONTROL PANEL**  
CPL.1586.WP



**PRESSURE REGULATOR**  
PR.1560B

## VALVE, REGULATOR AND MOUNTING BRACKET ASSEMBLIES



**VRBA.2035.WP**

1 1999A Weather Pack Valve  
1541B Pressure Regulator | 1988 Bracket



**VRBA.2090.WP**

1 2502B Weather Pack Valve  
1560B Pressure Regulator | 2148 Bracket



**VRBA.2175.WP**

1 2100C Weather Pack Valve  
1560B Pressure Regulator | 2148 Bracket



**VRBA.2508.WP**

1 2500B Weather Pack Valve  
1560B Pressure Regulator | 2148 Bracket

Our RC-10N Series is simple and robust. Ideal for all single Valve projects, this 12-Volt control system is built for 1 output with pressure gauge feedback. It is easily customizable to fit a wide variety of system assemblies.

#### CON.RC10N.WP



No Solenoid Valve included

#### CON.2055.WP



Includes 1999A Solenoid Valve  
for 18 GPM and up to 175 PSI

#### CON.2180.WP



Includes 2100C Solenoid Valve  
for 10 GPM and up to 125 PSI

#### CON.2375.WP



Includes 2500B Solenoid Valve  
for 10 GPM and up to 100 PSI

#### CON.2475.WP



Includes 2502B Solenoid Valve  
for 8 GPM and up to 175 PSI

#### CON.2490.WP



No Motorized Valve included

SPECS	CON.RC10N.WP	CON.2055.WP	CON.2180.WP	CON.2375.WP	CON.2475.WP	CON.2490.WP
REMOTE CONTROL PANEL ASSEMBLY WITH 1 MASTER CONTROL SWITCH AND PRESSURE REGULATOR CONTROL SWITCH	X	X	X	X	X	X
0-100 PSI/689 KPA PRESSURE GAUGE	X		X	X		
0-200 PSI/1378 KPA PRESSURE GAUGE		X			X	X
15' HARNESS	X	X	X	X	X	
20' HARNESS						X
8' POWER CORD	X	X	X	X	X	X
1-VALVE BANK ASSEMBLY		X	X	X	X	
VALVE MOUNTING BRACKET		X	X	X	X	
.75" PRESSURE REGULATOR	X		X	X	X	
1" PRESSURE REGULATOR		X				X
WEATHER PACK CONNECTORS	X	X	X	X	X	X
.75" PRESSURE ADAPTOR			X	X	X	
1" PRESSURE ADAPTOR		X				
1" NYLON NIPPLE						X

Green and yellow regulator power wires are not positive/negative specific.



# RC-3 SERIES CONTROL SYSTEMS

REMOTE CONTROL | 1-5 BOOM OUTPUTS

# RC-3

**CONTROL PANEL**  
CPL.2867.WP



**PRESSURE REGULATOR**  
PR.1560B

**PRESSURE ADAPTOR**  
PL.2152

**CONTROL PANEL**  
CPL.1716

**SPRAYER CONTROL HARNESS**  
HRN.2850.WP



**1" NYLON NIPPLE**  
PL.2057

Our RC-3 Series is built for ultimate control. With gauged and gaugeless options and multiple boom outputs, you can build a system suited to your precise needs. **These systems are drop-in replacements for the directional Raven SCS 300, 400 and select 600 series consoles.** All systems are compatible with TIR, Raven, KZ Valve and TeeJet 3-Pin Valves.

CON.2860.WP.3



No Motorized Valves included

CON.2861.WP.3



No Motorized Valves included

CON.2862.WP



No Motorized Valves included

## MULTIPLE BOOM OUTPUT SYSTEMS

SPECS	CON.2860.WP.3	CON.2861.WP.3	CON.2863.WP.3.NPR	CON.2864.WP.3.NPR	CON.2865.WP.3	CON.2870.WP.3
REMOTE CONTROL PANEL ASSEMBLY WITH MASTER CONTROL SWITCH, 2-5 BOOM OUTPUT SWITCHES & PRESSURE REGULATOR CONTROL SWITCH	X	X	X	X	X	X
GAUGELESS		X		X		X
0-160 PSI/ 1103 KPA PRESSURE GAUGE*	X		X		X	
0-200 PSI/ 1378 KPA PRESSURE GAUGE*						
10' CAB HARNESS	X	X	X	X	X	X
8' POWER CORD	X	X	X	X	X	X
12' SPRAYER HARNESS	X	X	X	X	X	X
3-PIN ELECTRIC/MOTORIZED VALVE WEATHER PACK CONNECTORS	X	X	X	X	X	X
.75" PRESSURE REGULATOR					X	X
1" PRESSURE REGULATOR	X	X				
1" NYLON NIPPLE	X	X	X	X	X	X

## SINGLE BOOM OUTPUT SYSTEMS

SPECS	CON.2862.WP	CON.2868.WP	CON.2869.WP.NPR
REMOTE CONTROL PANEL ASSEMBLY WITH 1 MASTER CONTROL SWITCH AND PRESSURE REGULATOR CONTROL SWITCH	X	X	X
0-200 PSI/ 1378 KPA PRESSURE GAUGE*	X	X	X
20' PANEL: VALVE HARNESS	X	X	X
8' POWER CORD	X	X	X
3-PIN ELECTRIC/MOTORIZED VALVE WEATHER PACK CONNECTORS	X	X	X
.75" PRESSURE REGULATOR		X	
1" PRESSURE REGULATOR	X		
1" NYLON NIPPLE	X	X	X

\*Gauges are available wet or dry  
Green and yellow regulator power wires are not positive/negative specific.

# NEW

## PRESSURE REGULATORS



## COMMAND. CONTROL. REGULATE.

Designed with ease in mind, TIR offers a line of Pressure Regulators built to meet the demands of any job. These regulators come with .75" NPT or 1" NPT female bypasses and will fit most standard hookups.

The newly designed butterfly Valves allow TIR Pressure Regulators to work with most centrifugal pumps and Valve types, providing you the ability to control your flow and get the most efficient output possible.

### 1" NPT PRESSURE REGULATOR PR.1541B

1" NPT Female Inlet and Outlet	
Maximum Pressure:	150 PSI (1034 kPa)
Recommended Flow Rate Ranges:	15-100 GPM
GPM - Bypass at Full Close:	<1.0
Voltage DC:	12.0
Current Draw:	.9 AMPs at 12 Volts
Actuation Time at 12V:	1.0 RPM

### .75" NPT PRESSURE REGULATOR PR.1560B

.75" NPT Female Inlet and Outlet	
Maximum Pressure:	150 PSI (1034 kPa)
Recommended Flow Rate Ranges:	Up to 50 GPM
GPM - Bypass at Full Close:	<0.5
Voltage DC:	12.0
Current Draw:	.9 AMPs at 12 Volts
Actuation Time at 12V:	1.0 RPM

### EQUIPMENT STANDARDS

- Glass-Filled Nylon Housing
- 430F Stainless Steel Wetted Metal Parts
- PA12 Butterfly Valve
- Viton Diaphragm, Seat and Seals
- Spade Connection Terminals

Pressure Regulators are not polarity specific.



# 2 // HARNESSES

Our durable, quick-connect harnesses provide a seamless, reliable connection from Control System to Sprayer Valve. They're available in a variety of lengths and connection types to provide the perfect fit for your system.



# SPRAYER HARNESSES

## CONTROL PANEL TO VALVE

Our Sprayer Harnesses provide a secure, direct connection from Control Panel to Valve, relaying the On/Off signals with speed and precision. We offer both WP and Spade Valve connections, and provide quick, easy integration with your current Output Valves and regulators. Custom lengths are available upon request.



### SPRAYER CONTROL HARNESSES

SPRAYER	SYSTEM	TYPE	VALVE	GAUGE AND WIRES	LENGTH	SYSTEM CONNECTION COMPATIBILITIES
HRN.1576.WP	RC2/RC1	WP	SOL	18/6	8'	3 B(CON.RC2); 3 B+PR
HRN.1244.WP	RC2/RC1	WP	SOL	18/8	8'	5 B+PR
HRN.2741.WP	RC1	WP	SOL	18/6	8'	2 B+PR
HRN.2735.WP	RC1	WP	SOL	18/7	8'	3,4 B+PR
HRN.2740.WP	RC2	WP	SOL	18/4	8'	2 B
HRN.2729.WP	RC2	WP	SOL	18/6	8'	4 B
HRN.2741	RC2/RC1	SPA	SOL	18/6	8'	2 B+PR
HRN.1576	RC2/RC1	SPA	SOL	18/6	8'	3 B(CON.RC2); 3 B+PR
HRN.1244	RC2/RC1	SPA	SOL	18/8	8'	5 B+PR
HRN.2735	RC1	SPA	SOL	18/7	8'	4 B+PR
HRN.2740	RC2	SPA	SOL	18/4	8'	2 B
HRN.2729	RC2	SPA	SOL	18/6	8'	4 B
HRN.2553.WP	RC2/RC1	WP	MV	18/7	10'	2 B+PR
HRN.2549.WP	RC2/RC1	WP	MV	18/7	10'	3 B+PR
HRN.2733.WP	RC2/RC1	WP	MV	20/7,18/2	10'	4 B+PR
HRN.2546.WP	RC2/RC1	WP	MV	20/7,18/2	10'	5 B+PR
HRN.2743.WP	RC2	WP	MV	18/7	10'	2 B
HRN.2757.WP	RC2	WP	MV	18/7	10'	3 B
HRN.2755.WP	RC2	WP	MV	20/7,18/2	10'	4 B
HRN.2763.WP	RC2	WP	MV	20/7,18/2	10'	5 B
HRN.2850.WP	RC3	WP	MV	18/7	12'	3 B
HRN.2851.WP	RC3	WP	MV	18/7	12'	3 B+PR

Standard lengths and gauges shown in table above.  
Custom lengths and wire/cable combinations can be quoted and built upon request.

# CAB & EXTENSION HARNESSES

## CONTROL PANEL TO SPRAYER

Our Cab Harnesses provide a reliable connection from control panel to sprayer harness. We offer a standard 6' length that connects your cab to the harness powering your Output Valves. Various lengths of extensions are available upon request for jobs requiring a longer connection.

### EXTENSION CONTROL HARNESSES

EXTENSION	SYSTEM	TYPE	VALVE	GAUGE AND WIRES	LENGTH	CONNECTION
HRN.1231.WP		WP	SOL	18/6	15'	H:H
HRN.1245.WP		WP	SOL	18/8	15'	H:H 2PIN+6PIN CONNECTORS
HRN.1585.WP	RC10	WP	SOL	18/4	15'	H:V
HRN.1245		SPA	SOL	18/8	15'	H:H 2PIN+6PIN CONNECTORS
HRN.1585	RC10	SPA	SOL	18/4	15'	H:V
HRN.2653.WP		WP	MV	18/7	15'	H:H 3 B
HRN.2556.WP		WP	MV	20/7, 18/2	15'	H:H 4,5 B+PR
HRN.2722.WP	RC10	WP	MV	18/7	10'	H:V 1 B+PR
HRN.2998.WP	RC3	WP	MV	18/7	10'	H:H 3 B+PR

### CAB CONTROL HARNESSES

CAB	SYSTEM	TYPE	VALVE	GAUGE AND WIRES	LENGTH	SYSTEM CONNECTION COMPATIBILITIES
HRN.1195.WP	RC2/RC1	WP	SOL	18/6	6'	2,3 B+PR; 3,4,5 B
HRN.1370.WP	RC2/RC1	WP	SOL	18/7	6'	4 B+PR
HRN.1243.WP	RC2/RC1	WP	SOL	18/8	6'	5 B+PR
HRN.2739.WP	RC2	WP	SOL	18/4	6'	2 B
HRN.1575.WP	RC10	WP	SOL	18/4	15'	1 B+PR
HRN.1575	RC10	SPA	SOL	18/4	15'	1 B+PR
HRN.2543.WP	RC2/RC1	WP	MV	20/7,18/2	10'	4,5 B+PR
HRN.2548.WP	RC2/RC1	WP	MV	18/7	10'	2,3,4,5 B; 2,3 B+PR
HRN.2457.WP	RC10	WP	MV	18/7	20'	1 B+PR
HRN.2865.WP	RC3	WP	MV	18/7	20'	1 B+PR

### PART NUMBER ABBREVIATION KEY

PREFIX	DESCRIPTION
WP	Weather Pack
SPA	Spade
SOL	Solenoid Valves
MV	Motorized/Ball Valves

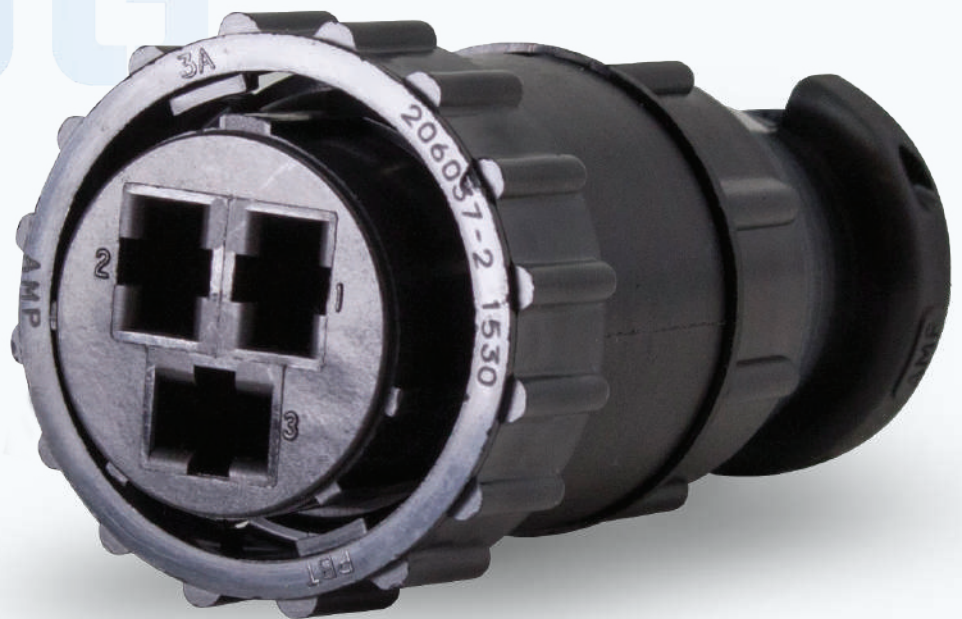
PR	Pressure Regulator
SYS	System Type
VLV	Valve Type
GA/W	Gauge/Wires
L	Length

H:H	Harness: Harness
H:V	Harness: Valve
B	Boom Suction

Cab Harnesses are not for individual sale.



# NEW AMP 3-PIN POWER PLUG



## POWER UP. POWER ON.

Our AMP 3 Pin Power Plug easily attaches to your in-cab power source, allowing quick and convenient powering of your panels. You can request to have the Power Plug added to your control panel in house, or purchase the plugs individually.

### KEY FEATURES

- Plug-and-play ready
- Fits any TIR control panel
- Allows for easy control panel mounting

# 3 // VALVES

Our versatile, best-in-class Valves allow you to work with complete confidence thanks to their durable materials and easy, in-line plumbing design. We offer 2-way, 3-way, On/Off, large and small Solenoid Valves in multiple quantity assemblies.



# SOLENOID VALVES

PILOT VALVE | 2-WAY | HIGH FLOW

VALVES | 2-WAY PILOT VALVE — PG 20



TIR E-CHIP™ COMPATIBLE

SPECS	SV.1999A.1V.WP
TIR E-CHIP™	SV.1999A.1V.WP.C
TYPE	2-Way Pilot Operating
MAXIMUM PRESSURE*	175 PSI (1200 kPa)
GPM	0-18 (65 LPM)
PRESSURE DROP	5 PSI at 18 GPM
VOLTAGE	12-Volt DC 24-Volt DC Available
STD. CURRENT DRAW	1.1 AMPs
CV RATING	8.0
VALVE HOUSING	Glass-Filled Nylon
WETTED METAL PARTS	304 & 430F Stainless Steel
COIL	Epoxy Encapsulated
VALVE	Normally Closed
DIAPHRAGM/SEAT/SEALS	Viton Aflas Available Viton A Available
TERMINALS	Weather Pack .25" Spade Available
INLETS/OUTLETS	1" NPT Female Bypass Inlet 1" NPT Male Bypass Outlet .75" Female Boom Outlet



All Valves are available in  
**BANKS OF 1 TO 5 VALVE CONFIGURATIONS**  
◀ SV.1999A.3V.WP



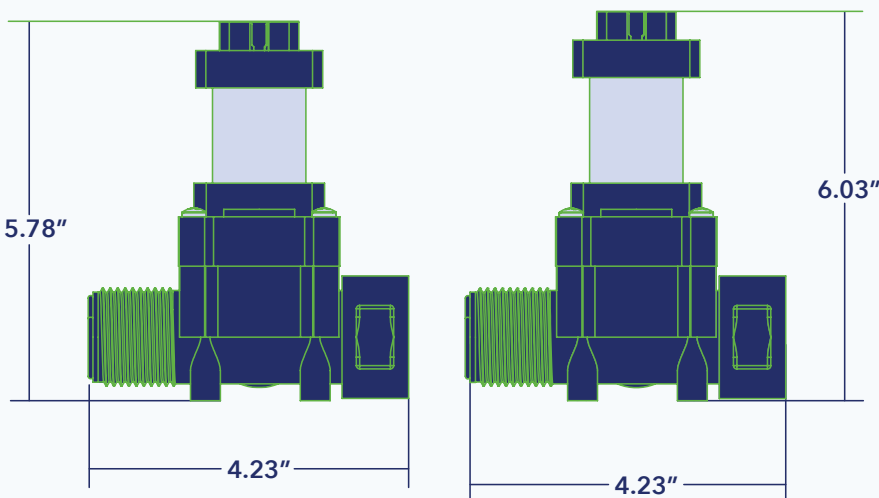
# UP TO 18 GPM IN ON/OFF CONFIGURATIONS

This 2-Way Pilot Valve is ideal for large, high flow projects. It can handle both fluid and water-soluble chemical mixtures and features an in-line plumbing design for easy implementation into any system.

ITEM NO.	PART NUMBER	DESCRIPTION	QTY.
1	PL.1962	VALVE BODY	1
2	SL.1974	VITON DIAPHRAGM ASSEMBLY, STANDARD	1
2	SL.2109	AFLAS DIAPHRAGM ASSEMBLY, OPTIONAL	1
3	SP.1975B	SPRING	1
4	VB.6963	VALVE COVER	1
5	OR.1976	VITON "O" RING 010	1
6	SCR.5305	6-32 X 2 5/8" SCREW	2
	NUT.5306	HEX NUT	2
7	OR.1977	VITON "O" RING 014	1
8	PLGR.2239	PLUNGER W/ VITON SEAT, STANDARD	1
8	PLGR.2240	PLUNGER W/ AFLAS SEAT, OPTIONAL	1
9	SP.1979	PLUNGER SPRING	1
10	CL.2515A	COIL ASSEMBLY	1
10A	CL.2520A.WP	COIL ASSEMBLY, WEATHER PACK	1
11	SCR.5307	NO. 8 X 1 1/2" SCREW	4

## DO YOU HAVE AN OLD VALVE?

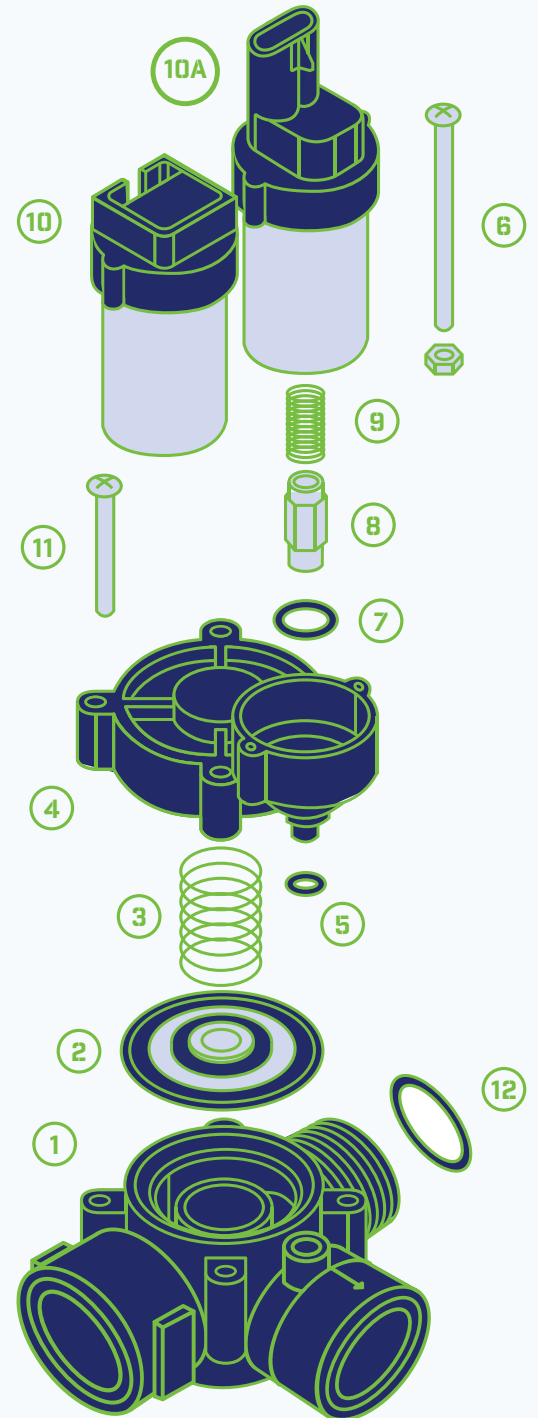
The previous style of SV.1999 Valves have a coil that's .25" taller than the current model.



SV.1999A.1V

SV.1999.1V

Current replacement parts and repair kits will not work with old style 1999 Valves. Old style 1999 components are no longer available for purchase. Contact the office for more information.



# SOLENOID VALVES

## 2-WAY | HIGH FLOWS

Featuring up to 10 GPM in On/Off configuration, our Solenoids for high flows use a single host to control whatever segments you break the fluid into. They can handle both fluid and water-soluble chemical mixtures. Each one provides quick component attachment with full air control within the flow.

SV.2100C.1V.WP



TIR E-CHIP™ COMPATIBLE

SV.2500B.1.WP



TIR E-CHIP™ COMPATIBLE

SV.2502B.1.WP



TIR E-CHIP™ COMPATIBLE

SPECS	SV.2100C.1V.WP	SV.2500B.1.WP	SV.2502B.1.WP
TIR E-CHIP™	SV.2100C.1V.WP.C	SV.2500B.1.WP.C	SV.2502B.1.WP.C
TYPE	2-Way Direct Operating	2-Way Direct Operating	2-Way Direct Operating
MAXIMUM PRESSURE*	125 PSI (861 kPa)	100 PSI (689 kPa)	175 PSI (1200 kPa)
GPM	0-10 (38 LPM)	0-10 (38 LPM)	0-8 (35 LPM)
PRESSURE DROP	7.5 PSI at 10 GPM	5 PSI at 10 GPM	5 PSI at 8 GPM
VOLTAGE	12-Volt DC	12-Volt DC	12-Volt DC
STD. CURRENT DRAW	2 AMPS	2 AMPS	2 AMPS
CV RATING	3.6	4.5	3.6
VALVE HOUSING	Glass-Filled Nylon	Glass-Filled Nylon	Glass-Filled Nylon
WETTED METAL PARTS	430F Stainless Steel	430F Stainless Steel	430F Stainless Steel
COIL	Epoxy Encapsulated	Epoxy Encapsulated	Epoxy Encapsulated
VALVE	Normally Closed	Normally Closed	Normally Closed
DIAPHRAGM/SEAT/SEALS	Viton	Viton	Viton
TERMINALS	Weather Pack .25" Spade Available	Weather Pack .25" Spade Available	Weather Pack .25" Spade Available
INLETS/OUTLETS	.75" NPT Female Bypass Inlet .75" NPT Male Bypass Outlet .5" NPT Female Boom Outlet	.75" NPT Female Bypass Inlet .75" NPT Male Bypass Outlet .5" NPT Female Boom Outlet	.75" NPT Female Bypass Inlet .75" NPT Male Bypass Outlet .5" NPT Female Boom Outlet



All Valves are available in  
**BANKS OF 1 TO 5 VALVE CONFIGURATIONS**  
See pages 14 and 16 for pressure and  
VRBA capability  
**SV.2502B.3.WP**

\*Maximum Pressure Calculations based on 13.4V D.C.

# SOLENOID VALVES

## ON/OFF AND 2-WAY | LOW TO MEDIUM FLOWS

These Solenoid On/Off and 2-Way Valves give you the power to control and mix harsh chemicals easily and reliably with precision On/Off functionality. These Valves also feature quick component attachment, air control capabilities and are ideal for low pressure, low to medium volume flows.

SV.2501B.WP



TIR E-CHIP™ COMPATIBLE

SV.3002A.WP



TIR E-CHIP™ COMPATIBLE

SV.3008A.WP



TIR E-CHIP™ COMPATIBLE

SV.3012A.WP



TIR E-CHIP™ COMPATIBLE

SV.3018A.WP



TIR E-CHIP™ COMPATIBLE

SPECS	SV.2501B.WP	SV.3002A.WP	SV.3008A.WP	SV.3012A.WP	SV.3018A.WP
TIR E-CHIP™	SV.2501B.WP.C	SV.3002A.WP.C	SV.3008A.WP.C	SV.3012A.WP.C	SV.3018A.WP.C
TYPE	Direct Operating On/Off	Direct Operating On/Off	Direct Operating On/Off	2-Way Direct Operating	2-Way Direct Operating
MAXIMUM PRESSURE*	150 PSI (1034 kPa)	130 PSI (895 kPa)	40 PSI (275 kPa)	130 PSI (895 kPa)	40 PSI (275 kPa)
GPM	0-6 (22.7 LPM)	0-3.1 (11 LPM)	0-4 (15 LPM)	0-3.1 (11 LPM)	0-4 (15 LPM)
PRESSURE DROP	5 PSI at 6 GPM	4.5 PSI at 3.1 GPM	5 PSI at 4 GPM	4.5 PSI at 3.1 GPM	5 PSI at 4 GPM
VOLTAGE	12-Volt DC	12-Volt DC	12-Volt DC	12-Volt DC	12-Volt DC
STD. CURRENT DRAW	2 AMPS	1.7 AMPS	1.1 AMPS	1.1 AMPS	1.1 AMPS
CV RATING	2.7	1.48	1.83	1.48	1.83
VALVE HOUSING	Glass-Filled Nylon	Glass-Filled Nylon	Glass-Filled Nylon	Glass-Filled Nylon	Glass-Filled Nylon
WETTED METAL PARTS	430F Stainless Steel	430F Stainless Steel	430F Stainless Steel	430F Stainless Steel	430F Stainless Steel
COIL	Epoxy Encapsulated	Epoxy Encapsulated	Epoxy Encapsulated	Epoxy Encapsulated	Epoxy Encapsulated
VALVE	Normally Closed	Normally Closed	Normally Closed	Normally Closed	Normally Closed
DIAPHRAGM/SEAT/SEALS	Viton	Viton	Viton	Viton	Viton
TERMINALS	Weather Pack .25" Spade Available	Weather Pack .25" Spade Available	Weather Pack .25" Spade Available	Weather Pack .25" Spade Available	Weather Pack .25" Spade Available
INLETS/OUTLETS	.5" NPT Female Inlet .5" NPT Female Outlet	.5" NPT Female Inlet .5" NPT Female Outlet	.5" NPT Female Inlet .5" NPT Female Outlet	.75" NPT Female Inlet .75" NPT Male Bypass Outlet .5" NPT Female Boom Outlet	.75" NPT Female Inlet .75" NPT Male Bypass Outlet .5" NPT Female Boom Outlet

\*Maximum Pressure Calculations based on 13.4V D.C.

All Valves are available in banks of 1 to 5 Valve Configurations.



# SOLENOID VALVES

## ON/OFF | LOW FLOWS

The Small Solenoid Valves are ideal for placement on end nozzles, foam markers, small sprayers and chemical injection systems. With quick component attachment and fully encapsulated, waterproof coils, these Valves give you total, precise control over the spray tip and air flow.

SV.2201A.WP



TIR E-CHIP™ COMPATIBLE



SV.2202A.WP



TIR E-CHIP™ COMPATIBLE

SV.2203A.WP



TIR E-CHIP™ COMPATIBLE

SV.2206A.WP



TIR E-CHIP™ COMPATIBLE

SPECS	SV.2201A.WP	SV.2202A.WP	SV.2203A.WP	SV.2206A.WP
TIR E-CHIP™	SV.2201A.WP.C	SV.2202A.WP.C	SV.2203A.WP.C	SV.2206A.WP.C
EMI SUPPRESSED	SV.2201A.WP.EMI			
PUSH-TO-CONNECT	SV.4051.WP.C	SV.4050.WP.C		
TYPE	Direct Operating On/Off	Direct Operating On/Off	Direct Operating On/Off	Direct Operating On/Off
MAXIMUM PRESSURE*	125 PSI (861 kPa)	80 PSI (551 kPa)	175 PSI (1200 kPa)	200 PSI (1378 kPa)
GPM	0-1 (3.79 LPM)	0-1 (3.79 LPM)	0-.5 (1.9 LPM)	0-.22 (0.85 LPM)
PRESSURE DROP	5 PSI at 1 GPM	5 PSI at 1 GPM	3.5 PSI at .5 GPM	5 PSI at .22 GPM
VOLTAGE	12-Volt DC 24-Volt DC Available	12-Volt DC 24-Volt DC Available	12-Volt DC 24-Volt DC Available	112-Volt DC 24-Volt DC Available
STD. CURRENT DRAW	1.1 AMPs	.85 AMPs	.85 AMPs	.85 AMPs
CV RATING	0.45	0.45	0.26	0.1
VALVE HOUSING	Glass-Filled Nylon	Glass-Filled Nylon	Glass-Filled Nylon	Glass-Filled Nylon
WETTED METAL PARTS	304 and 430F Stainless Steel	304 and 430F Stainless Steel	304 and 430F Stainless Steel	304 and 430F Stainless Steel
COIL	Epoxy Encapsulated	Epoxy Encapsulated	Epoxy Encapsulated	Epoxy Encapsulated
VALVE	Normally Closed	Normally Closed	Normally Closed	Normally Closed
DIAPHRAGM/SEALS	Viton	Viton	Viton	Viton
TERMINALS	Weather Pack .25" Spade Available	Weather Pack .25" Spade Available	Weather Pack .25" Spade Available	Weather Pack .25" Spade Available
STD. INLETS/OUTLETS	.25" NPT Female Inlet .25" NPT Female Outlet Push-To-Connect Attachments available	.25" NPT Female Inlet .25" NPT Female Outlet Push-To-Connect Attachments available	.25" NPT Female Inlet .25" NPT Female Outlet	.25" NPT Female Inlet .25" NPT Female Outlet



### AVAILABLE WITH EMI SUPPRESSION

EMI (Electro Magnetic Interference) suppression reduces peak spikes.

\*Maximum Pressure Calculations based on 13.4V D.C.

All Valves are available in banks of 1 to 5 Valve Configurations.

# SOLENOID VALVES

## 3-WAY | LOW FLOWS

When it comes to medium to high pressure, low flow applications, our 3-Way Solenoid Valves deliver. They offer total control over a low directional flow of fluid and air, which makes them ideal for applications such as, but not limited to, foam markers. Want to redirect the flow? Simply turn the bottom outlet on or off.

SV.2204A.WP



SV.2504B.WP



SV.2210.WP



SPECS	SV.2204A.WP	SV.2504B.WP	SV.2210.WP
TYPE	3-Way Direct Operating	3-Way Direct Operating	3-Way Direct Operating
MAXIMUM PRESSURE*	55 PSI (380 kPa)	75 PSI (571 kPa)	200 PSI (1378 kPa)
GPM	0-.5 (1.9 LPM)	0-2 (7.5 LPM)	0-.5 (1.9 LPM)
PRESSURE DROP	5 PSI at .5 GPM	5 PSI at 2 GPM	5 PSI at .5 GPM
VOLTAGE	12-Volt DC	12-Volt DC	12-Volt DC
STD. CURRENT DRAW	.85 AMPS	1.1 AMPS	1.1 AMPS
CV RATING	0.22	0.9	0.22
VALVE HOUSING	Glass-Filled Nylon	Glass-Filled Nylon	Glass-Filled Nylon
WETTED METAL PARTS	304 and 430F Stainless Steel	304 and 430F Stainless Steel	304 and 430F Stainless Steel
COIL	Epoxy Encapsulated	Epoxy Encapsulated	Epoxy Encapsulated
VALVE	Bottom Outlet Normally Closed Upper Outlet Normally Open	Bottom Outlet Normally Closed Upper Outlet Normally Open	Bottom Outlet Normally Closed Upper Outlet Normally Open
SEALS	Viton	Viton	Viton
TERMINALS	Weather Pack .25" Spade Available	Weather Pack	Weather Pack .25" Spade Available
INLETS/OUTLETS	.25" NPT Female Inlet (2).25" NPT Female Outlets	.5" NPT Female Inlet (2).5" NPT Female Outlets	.25" NPT Female Inlet (2).25" NPT Female Outlets

\*Maximum Pressure Calculations based on 13.4V D.C.  
All Valves are available in banks of 1 to 5 Valve Configurations.

# NOZZLE BODY VALVES

## ON/OFF | LOW FLOWS

Designed specifically for spraying, these Valves give you precise control of the spray nozzle. They can accommodate multiple spray tips and patterns at the same time and are recommended for boom end nozzles, individual nozzle shutoffs and where instantaneous opening and shutoff are desirable. Our nozzle body outlets are compatible with most industry-standard quick connect nozzle caps.

NB.2601A.WP



NB.2602A.WP



NB.2603A.WP



SPECS	NB.2601A.WP	NB.2602A.WP	NB.2603A.WP
TYPE	Direct Operating On/Off	Direct Operating On/Off	Direct Operating On/Off
MAXIMUM PRESSURE*	125 PSI (861 kPa)	80 PSI (551 kPa)	175 PSI (1200 kPa)
GPM	0-1 (3.79 LPM)	0-1 (3.79 LPM)	0-.5 (1.9 LPM)
PRESSURE DROP	5 PSI at 1 GPM	5 PSI at 1 GPM	3.5 PSI at .5 GPM
VOLTAGE	12-Volt DC 24-Volt DC Available	12-Volt DC 24-Volt DC Available	12-Volt DC 24-Volt DC Available
STD. CURRENT DRAW	1.1 AMPs	.85 AMPs	.85 AMPs
CV RATING	0.45	0.45	0.26
VALVE HOUSING	Glass-Filled Nylon	Glass-Filled Nylon	Glass-Filled Nylon
WETTED METAL PARTS	304 and 430F Stainless Steel	304 and 430F Stainless Steel	304 and 430F Stainless Steel
COIL	Epoxy Encapsulated	Epoxy Encapsulated	Epoxy Encapsulated
VALVE	Normally Closed	Normally Closed	Normally Closed
SEALS	Viton	Viton	Viton
TERMINALS	Weather Pack	Weather Pack	Weather Pack
INLETS/OUTLETS	.25" NPT Female Inlet .25" Nozzle Body Outlet	.25" NPT Female Inlet .25" Nozzle Body Outlet	.25" NPT Female Inlet .25" Nozzle Body Outlet

\*Maximum Pressure Calculations based on 13.4V D.C.



# MANIFOLD VALVES

## MANIFOLD NOZZLE BODY VALVES AND MANIFOLD ON/OFF VALVES | LOW FLOWS

Both the Manifold Nozzle Body and Manifold On/Off Valves are packaged compactly to ensure precise control of the most complex systems. This allows you to manage different areas, times and chemicals all out of one small unit. The Manifold Nozzle Body Valves feature instantaneous On/Off speeds and are compatible with most industry-standard quick connect nozzle caps. The Manifold On/Off Valves can be used in air-testing equipment.

NB.2605.WP



NB.2606A.WP



SV.2208.WP 



SV.2209.WP 



SV.2632.WP 



SV.2634.WP 



SPECS	NB.2605.WP	NB.2606A.WP	SV.2208.WP	SV.2209.WP	SV.2632.WP	SV.2634.WP
EMI SUPPRESSED			SV.2208.WP.EMI	SV.2209.WP.EMI	SV.2632.WP.EMI	SV.2634.WP.EMI
TYPE	Direct Operating On/Off Manifold	Direct Operating On/Off Manifold	Direct Operating On/Off Manifold	Direct Operating On/Off Manifold	Direct Operating On/Off Manifold	Direct Operating On/Off Manifold
MAXIMUM PRESSURE*	80 PSI (550 kPa)	80 PSI (550 kPa)	80 PSI (551 kPa)	80 PSI (551 kPa)	80 PSI (550 kPa)	80 PSI (550 kPa)
GPM	0-1 (3.79 LPM)	0-1 (3.79 LPM)	0-1 (3.79 LPM)	0-1 (3.79 LPM)	0-1 (3.79 LPM)	0-1 (3.79 LPM)
PRESSURE DROP	5 PSI at 1 GPM	5 PSI at 1 GPM	5 PSI at 1 GPM	5 PSI at 1 GPM	5 PSI at 1 GPM	5 PSI at 1 GPM
VOLTAGE	12-Volt DC 24-Volt DC Available	12-Volt DC 24-Volt DC Available	12-Volt DC 24-Volt DC Available	12-Volt DC 24-Volt DC Available	12-Volt DC 24-Volt DC Available	12-Volt DC 24-Volt DC Available
STD. CURRENT DRAW	.85 AMPS	.85 AMPS	.85 AMPS	.85 AMPS	.85 AMPS	.85 AMPS
CV RATING	0.45	0.45	0.45	0.45	0.45	0.45
VALVE HOUSING	Glass-Filled Nylon	Glass-Filled Nylon	Glass-Filled Nylon	Glass-Filled Nylon	Glass-Filled Nylon	Glass-Filled Nylon
WETTED METAL PARTS	304 and 430F Stainless Steel	304 and 430F Stainless Steel	304 and 430F Stainless Steel	304 and 430F Stainless Steel	304 and 430F Stainless Steel	304 and 430F Stainless Steel
COIL	Epoxy Encapsulated	Epoxy Encapsulated	Epoxy Encapsulated	Epoxy Encapsulated	Epoxy Encapsulated	Epoxy Encapsulated
VALVE	Normally Closed	Normally Closed	Normally Closed	Normally Closed	Normally Closed	Normally Closed
SEALS/O-RINGS	Viton	Viton	Viton	Viton	Viton	Viton
TERMINALS	Weather Pack	Weather Pack	Weather Pack	Weather Pack	Weather Pack	Weather Pack
MANIFOLD		Stackable		Stackable	Left Option	Right Option
SECTIONS	Single Valve	Up to 4	Single Valve	Up to 4	Single Valve	Single Valve
CONNECTION TYPE	Single Valve with Mounting Hardware for .75" Boom Pipe with .375" drilled hole	Two Valves with Mounting Hardware for .75" Boom Pipe with .375" drilled holes	Single Valve with Mounting Hardware for .75" Boom Pipe with .375" drilled hole	Two Valves with Mounting Hardware for .75" Boom Pipe with .375" drilled holes	Single Valve with Ability to Plug into PVC Pipe with .375" Drilled Hole	Single Valve with Ability to Plug into PVC Pipe with .375" Drilled Hole
INLETS/OUTLETS	.25" NPT Nozzle Body Outlet	.25" Nozzle Body Outlet	.25" NPT Outlet	.25" NPT Outlet	.25" NPT Outlet	.25" NPT Outlet
CONFIGURATION	Loose Valve with Mounting Hardware	Loose Valves with Mounting Hardware	Configured In-Line	Configured In-Line	.68 AMPS	.68 AMPS



Available in  
**UP TO 8 DIFFERENT  
CUSTOM CONFIGURATIONS**  
◀ SV.2209.WP



**AVAILABLE WITH EMI SUPPRESSION**  
EMI (Electro Magnetic Interference) suppression reduces spikes. Diode reduces voltage of coil from 0.85 to 0.68 AMPS.

\*Maximum Pressure Calculations based on 13.4V D.C.

# PUSH-TO-CONNECT VALVES

ON/OFF | SMALL VALVES | EASY CONNECT

## KEY FEATURES

- Compatible with plastic or soft metal tubing in both inch and metric sizes
- Grip of the PTC teeth increases with Valve Pressure
- Easy to assemble
- High retention

Available on all styles of TIR On/Off low-flow, small Solenoid Valves and some 3-Way low-flow Valves including:

SV.2201A.WP [SPADE, WP, EMI & E-CHIP]

SV.2202A.WP [SPADE, WP & E-CHIP]

SV.2203A.WP [SPADE, WP & E-CHIP]

SV.2204A.WP [SPADE & WP]

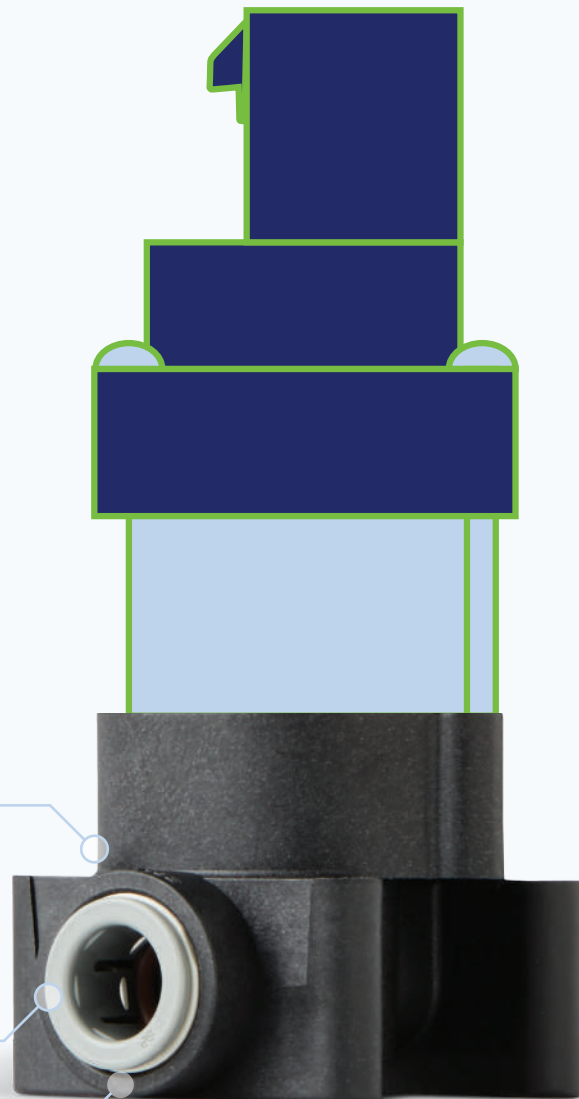
SV.2206A.WP [SPADE, WP & E-CHIP]

SV.2210.WP [SPADE & WP]

The collet gripper has stainless steel teeth which hold the tube in position while the O-ring provides a leak-proof seal

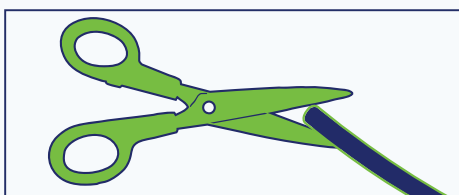
COLLET

STAINLESS STEEL  
TEETH GRIP THE PIPE



Our reliable and efficient 3/8" Push-To-Connect Valves are fit with a collet gripper, Viton O-Ring and plastic body with stainless steel teeth for easy manual assembly. Simply pushing a tube into the Valve creates a leak-proof connection for your project. These Valves can fit onto a wide variety of equipment thanks to their plastic half-cartridges that require low insert loads.

## HOW TO MAKE A STANDARD CONNECTION



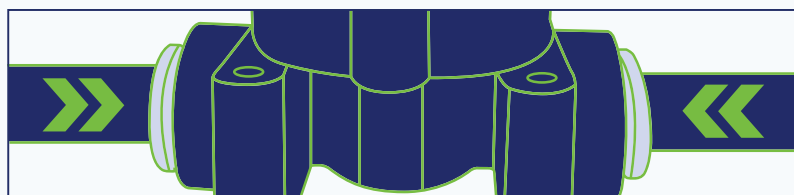
### 1. CUT THE TUBE SQUARE

Cut the tube square on end, and remove burrs and sharp edges.



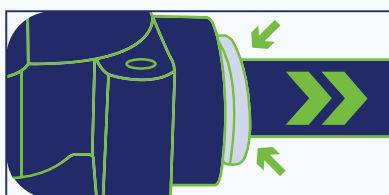
### 2. PUSH UP TO TUBE STOP

Push square end of tube into the fitting.



### 3. PULL TO CHECK IF SECURE

Pull on the tubing to check that the connection is secure.



### 4. TO DISCONNECT

Depressurize the system. Push the collet square against the fitting. With the collet square held in position, the tube can be removed.



# TIR E-CHIP™ VALVES

SOLENOID VALVES | ON/OFF, 2-WAY AND 3-WAY | ALL FLOWS

## TIR E-Chip™ Compatible Valves:

SV.1999A.1V.WP

SV.2100C.1V.WP

SV.2500B.1.WP

SV.2502B.1.WP

SV.2501B.WP

SV.3002A.WP

SV.3008A.WP

SV.3012A.WP

SV.3018A.WP

SV.2201A.WP

SV.2202A.WP

SV.2203A.WP

SV.2206A.WP

NB.2601A.WP

NB.2602A.WP

NB.2603A.WP

NB.2605A.WP

NB.2606A.WP

SV.2208.WP

SV.2209.WP

SV.2632.WP

SV.2634.WP



## SV.1999A.1V.WP.C WITH TIR E-CHIP™

Our TIR E-Chip™ Valves reduce power consumption and operating temperature by allowing full current during a pull-in phase, then reducing amperage draw to around 1/3 of normal Valve amperage requirements. The Valves are compatible in most control systems and can be assembled in Valves up to 5 banks.

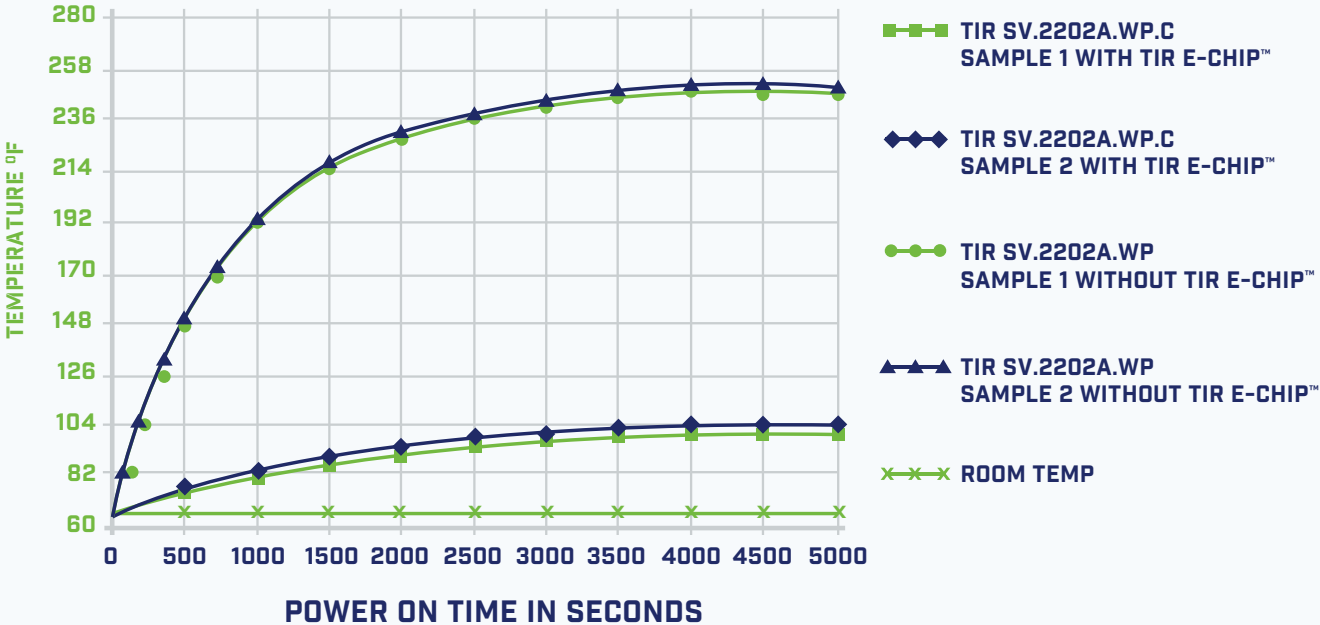
### KEY FEATURES

- Wide input voltage range
- Increased solenoid performance
- Power saving
- Limited heating
- Full protection against coil discharge and reverse voltage

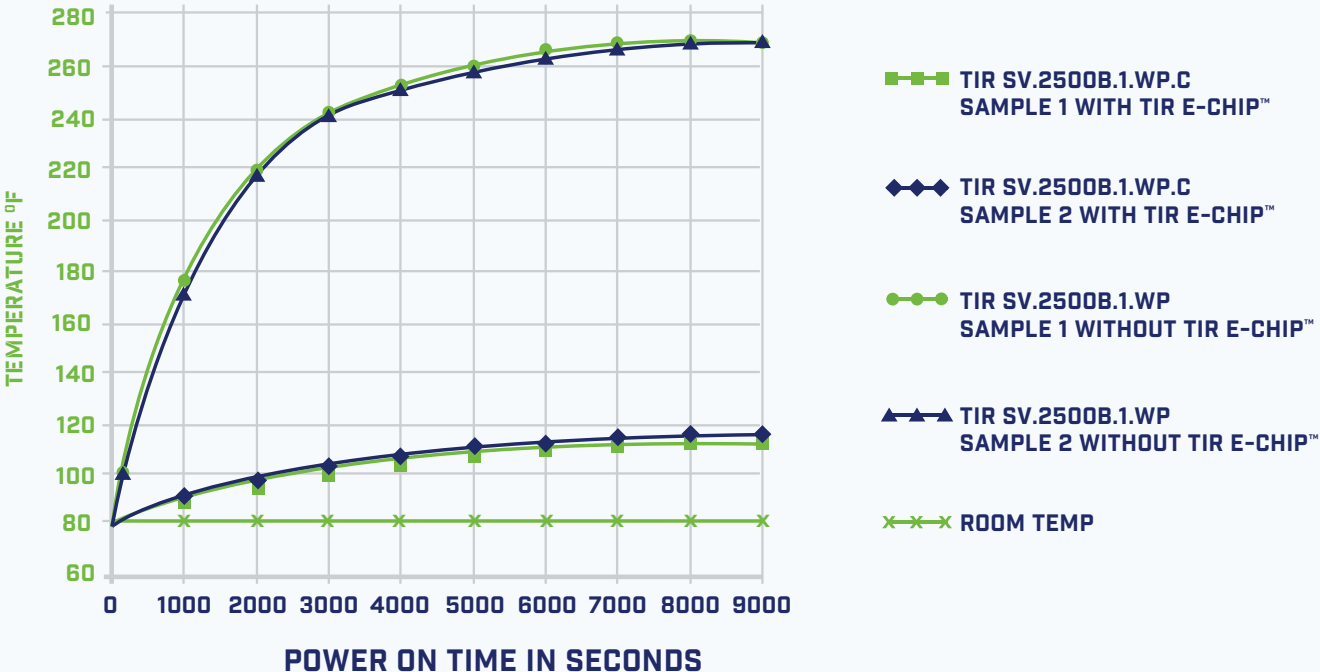
To order a TIR E-Chip™ Valve add ".C" to the part number (i.e., for a SV.1999A.1V.WP TIR E-Chip™ Valve order "SV.1999A.1V.WP.C").

Power consumption, input voltage and operating temperatures are reduced thanks to a small interface electronic board installed in the Valve. Amperage is reduced by 66% of normal Valve amperage requirements, and coil discharge that causes reverse voltage is less of an issue. TIR E-Chip™ can be installed in all 2-way Weather Pack Solenoid Valves.

TIR E-CHIP™ VS. SMALL .85 AMP SOLENOIDS RUNNING DRY



TIR E-CHIP™ VS. LARGE 2.0 AMP SOLENOIDS RUNNING DRY



# MANUAL VALVE

## 2-WAY | HIGH FLOWS

We recommend a 2-Way Operating Manual Valve for application purposes where a Solenoid Valve could be used but no power is available. These 2-Way Operating Valves can be controlled by hand or by rope.



2-WAY MANUAL VALVE  
MNV.2750B

SPECS	MNV.2750B
TYPE	2-Way Direct Operating
MAXIMUM PRESSURE*	175 PSI (1200 kPa)
GPM	0-10 (38 LPM)
PRESSURE DROP	5 PSI at 10 GPM
VOLTAGE	0
STD. CURRENT DRAW	0
CV RATING	4.5
VALVE HOUSING	Glass-Filled Nylon
WETTED METAL PARTS	304 Stainless Steel
COIL	None
SEALS	Viton
TERMINALS	None
INLETS/OUTLETS	.75" NPT Female Inlet .75" NPT Male Bypass Outlet .5" NPT Female Boom Outlet



# 4 // ELECTRIC & MOTORIZED VALVES

Designed for quick component attachment, our lineup of easy-to-manage electric and Motorized Valves gives you complete control over any type of fluid or viscosity your high-flow project demands.



# ELECTRIC BALL VALVES

## 2-WAY AND 3-WAY | HIGH FLOWS

Our Electric Ball Valves give you control over thick and thin viscosities with medium pressure across a high volume flow. Have grittier materials? These work great because they are not easily clogged. Expect quick connection to a variety of plumbing attachments, then go between 2-Way and 3-Way by plugging or unplugging the outlets.

MV.2701



MV.2702.1



MV.2702.1F



SPECS	MV.2701	MV.2702.1	MV.2702.1F
TYPE	2 or 3-Way Operating	2 or 3-Way Operating Manifold	2 or 3-Way Operating Flanged Manifold
MAXIMUM PRESSURE*	200 PSI (1378 kPa)	200 PSI (1378 kPa)	200 PSI (1378 kPa)
GPM	0-30 (110 LPM)	0-30 (110 LPM)	0-30 (110 LPM)
PRESSURE DROP	5 PSI at 30 GPM	5 PSI at 30 GPM	5 PSI at 30 GPM
STD. CURRENT DRAW	2.5 AMPs	2.5 AMPs	2.5 AMPs
CV RATING	13.4	13.4	13.4
OPEN/CLOSE TIME	.8 Seconds	.8 Seconds	.8 Seconds
VALVE HOUSING	Glass-Filled Nylon	Glass-Filled Nylon	Glass-Filled Nylon
WETTED METAL PARTS	303 Stainless Steel	303 Stainless Steel	303 Stainless Steel
O-RINGS	Viton	Viton	Viton
BALL AND SHAFT SEALS	Teflon	Teflon	Teflon
MOTOR	Totally Enclosed Protected by Self-Resetting Fuse	Totally Enclosed Protected by Self-Resetting Fuse	Totally Enclosed Protected by Self-Resetting Fuse
TERMINALS	12" Wire with 3 Pin Weather Pack Connector	12" Wire with 3 Pin Weather Pack Connector	12" Wire with 3 Pin Weather Pack Connector
MANIFOLD		Stackable	Stackable
SECTIONS	Single Valve	Up to 5	Up to 5
INLETS/OUTLETS	1" NPT Side Outlets 1" NPT Bottom Inlet	1" NPT Side Outlets 1.5" NPT End Plates 1" NPT End Plates Available Blank End Plates Available	.75" NPT Flanged Side Outlets 1.5" NPT Flanged Bypass
PIPE PLUG	1"	1"	.75"



All Valves are available in  
**BANKS OF 1 TO 5 VALVE CONFIGURATIONS**  
◀ MV.2702.3

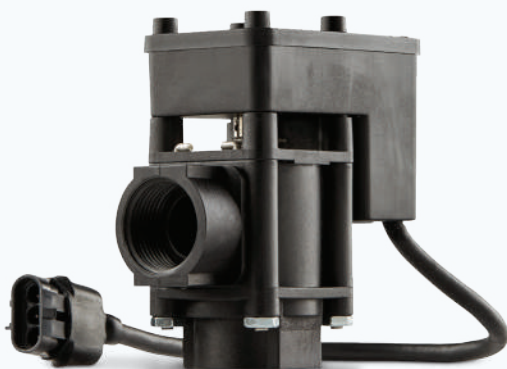
\*Maximum Pressure Calculations  
based on 13.4V D.C.

# MOTORIZED VALVES

## 2-WAY | HIGH FLOWS

Our 2-Way Motorized Valves are a good choice for controlling high volume flows at medium pressure. Designed for quick component attachment and a wide variety of plumbing connections, these lightweight Valves feature sealed connectors that draw minimal amperage.

MV.2402



MV.2404.1



MV.2404.1F



SPECS	MV.2402	MV.2404.1	MV.2404.1F
TYPE	2-Way Operating	2-Way Operating Manifold	2-Way Operating Flanged Manifold
MAXIMUM PRESSURE*	150 PSI (1034 kPa)	150 PSI (1034 kPa)	150 PSI (1034 kPa)
GPM	0-20 (75 LPM)	0-20 (75 LPM)	0-20 (75 LPM)
PRESSURE DROP	5 PSI at 20 GPM	5 PSI at 20 GPM	5 PSI at 20 GPM
STD. CURRENT DRAW	2.5 AMPS	2.5 AMPS	2.5 AMPS
CV RATING	8.94	8.94	8.94
OPEN/CLOSE TIME	.8 Seconds	.8 Seconds	.8 Seconds
VALVE HOUSING	Glass-Filled Nylon	Glass-Filled Nylon	Glass-Filled Nylon
WETTED METAL PARTS	303 Stainless Steel	303 Stainless Steel	303 Stainless Steel
SEAL AND O-RINGS	Viton	Viton	Viton
MOTOR	Totally Enclosed Protected by Self-Resetting Fuse	Totally Enclosed Protected by Self-Resetting Fuse	Totally Enclosed Protected by Self-Resetting Fuse
TERMINALS	12" Wire with 3 Pin Weather Pack Connector	12" Wire with 3 Pin Weather Pack Connector	12" Wire with 3 Pin Weather Pack Connector
MANIFOLD		Stackable	Stackable
SECTIONS	Single Valve	Up to 5	Up to 5
INLETS/OUTLETS	1" NPT Side Outlet 1" NPT Bottom Inlet	1" NPT Side Outlet 1.5" NPT End Plates 1" NPT End Plates Available Blank End Plates Available	.75" NPT Flanged Side Outlet 1.5" NPT Flanged Bypass



All Valves are available in  
**BANKS OF 1 TO 5 VALVE CONFIGURATIONS**  
◀ MV.2404.3

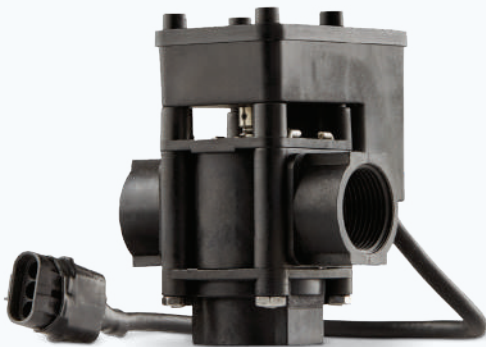
\*Maximum Pressure Calculations  
based on 13.4V D.C.

# MOTORIZED VALVES

## 3-WAY | HIGH FLOWS

Our 3-Way Motorized Valves give you multi-directional functionality for high volume flows at medium pressure. They offer quick component attachment and a wide variety of plumbing connections in a lightweight body. Sealed connectors draw minimal amperage.

MV.2401



MV.2403.1



MV.2403.1F



SPECS	MV.2401	MV.2403.1	MV.2403.1F
TYPE	3-Way Operating	3-Way Operating Manifold	3-Way Operating Flanged Manifold
MAXIMUM PRESSURE*	150 PSI (1034 kPa)	150 PSI (1034 kPa)	150 PSI (1034 kPa)
GPM	0-18 (65 LPM)	0-18 (65 LPM)	0-18 (65 LPM)
PRESSURE DROP	5 PSI at 18 GPM	5 PSI at 18 GPM	5 PSI at 18 GPM
VOLTAGE	12 Volt DC	12 Volt DC	12 Volt DC
STD. CURRENT DRAW	2.5 AMPs	2.5 AMPs	2.5 AMPs
CV RATING	8.05	8.05	8.05
OPEN/CLOSE TIME	.8 Seconds	.8 Seconds	.8 Seconds
VALVE HOUSING	Glass-Filled Nylon	Glass-Filled Nylon	Glass-Filled Nylon
WETTED METAL PARTS	303 Stainless Steel	303 Stainless Steel	303 Stainless Steel
SEAL AND O-RINGS	Viton	Viton	Viton
MOTOR	Totally Enclosed Protected by Self-Resetting Fuse	Totally Enclosed Protected by Self-Resetting Fuse	Totally Enclosed Protected by Self-Resetting Fuse
TERMINALS	12" Wire with 3 Pin Weather Pack Connector	12" Wire with 3 Pin Weather Pack Connector	12" Wire with 3 Pin Weather Pack Connector
MANIFOLD		Stackable	Stackable
SECTIONS	Single Valve	Up to 5	Up to 5
INLETS/OUTLETS	1" NPT Side Outlets 1" NPT Bottom Inlet	1" NPT Side Outlets 1" NPT End Plates 1.5" End Plates Available Blank End Plates Available	.75" NPT Flanged Side Outlets 1.5" NPT Flanged Bypass



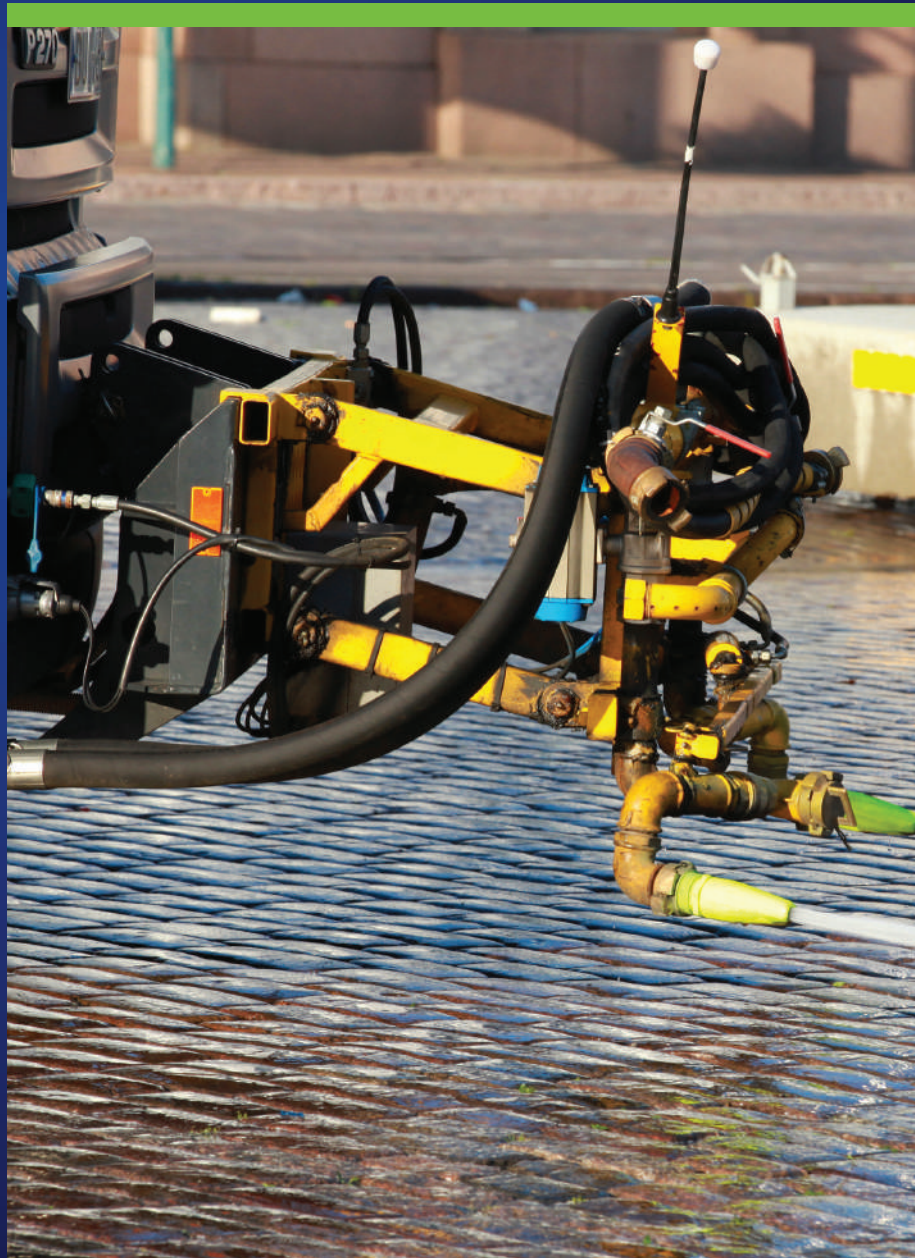
All Valves are available in  
**BANKS OF 1 TO 5 VALVE CONFIGURATIONS**  
◀ MV.2403.3

\*Maximum Pressure Calculations  
based on 13.4V D.C.



# 5 // ACCESSORIES

Round out every detail of your project with our lineup of custom-fit, plug-and-play accessories. From mounting brackets to pressure adaptors, find the exact piece you need to get your work done right.



# ACCESSORIES

## KITS

### COIL CONVERSION KITS (FOR USE IF NEEDING TO UPDATE A COIL FROM AN OLD STYLE TO A CURRENT STYLE OR TO REPLACE A COIL)

<b>KT.2609</b>	Solenoid Valve	Spade	1999A & 2201A	Aflas	<ul style="list-style-type: none"> <li>• CL.2515A - 1999A/2201A 2 PC Spade Coil</li> <li>• SCR.5305 - Phil Pan Screw</li> <li>• NUT.5306 - Hex Nut</li> </ul>	<ul style="list-style-type: none"> <li>• OR.1977 - 014 Viton O-Ring</li> <li>• PLGR.2240 - Plunger with Aflas Seat</li> <li>• SP.1979 - .62" Compression Spring</li> </ul>
<b>KT.2613</b>	Solenoid Valve	Spade	1999A & 2201A	Viton	<ul style="list-style-type: none"> <li>• CL.2515A - 1999A/2201A 2 PC Spade Coil</li> <li>• SCR.5305 - Phil Pan Screw</li> <li>• NUT.5306 - Hex Nut</li> </ul>	<ul style="list-style-type: none"> <li>• OR.1977 - 014 Viton O-Ring</li> <li>• PLGR.2239 - Plunger with Viton Seat</li> <li>• SP.1979 - .62" Compression Spring</li> </ul>
<b>KT.2614</b>	Solenoid Valve	WP	1999A & 2201A	Viton	<ul style="list-style-type: none"> <li>• CL.2520A.WP - 1999A/2201A 2 PC WP Coil</li> <li>• SCR.5305 - Phil Pan Screw</li> <li>• NUT.5306 - Hex Nut</li> </ul>	<ul style="list-style-type: none"> <li>• OR.1977 - 014 Viton O-Ring</li> <li>• PLGR.2239 - Plunger with Viton Seat</li> <li>• SP.1979 - .62" Compression Spring</li> </ul>

### HARNESS REPAIR/CONVERSION KITS

<b>KT.5345</b>	Sprayer	WP	<ul style="list-style-type: none"> <li>• WPC.5410 - 6 Contact WP Tower Half</li> <li>• WPC.5411 - Cable Seals</li> </ul>	<ul style="list-style-type: none"> <li>• TRM.5415 - WP Female Plated Terminals</li> </ul>	Can be used to replace molded plugs at the Sprayer to Cab Harness connection point or convert a spade connection to a Weather Pack
<b>KT.5346</b>	Cab	WP	<ul style="list-style-type: none"> <li>• WPC.5409 - 6 Contact WP Shroud Half</li> <li>• WPC.5411 - Cable Seals</li> </ul>	<ul style="list-style-type: none"> <li>• TRM.5414 - WP Male Plated Terminals</li> </ul>	Can be used to convert molded plug connections at the Cab to Sprayer Harness connection point or to convert a spade connection to a Weather Pack

### PRESSURE GAUGE KITS

<b>KT.1194</b>	Pressure Gauge	2"	100 PSI	¼" NPT	<ul style="list-style-type: none"> <li>• PG.1331 - 2" 100 PSI ¼" NPT Pressure Gauge</li> <li>• NUT.1320 - Hex Nut</li> </ul>	<ul style="list-style-type: none"> <li>• NUT.1204 - 1/8" Ferrule Nut</li> </ul>
<b>KT.1332</b>	Pressure Gauge	2.5"	100 PSI	¼" NPT	<ul style="list-style-type: none"> <li>• PG.2762 - 2.5" 100 PSI ¼" NPT Pressure Gauge</li> <li>• NUT.1320 - Hex Nut</li> </ul>	<ul style="list-style-type: none"> <li>• NUT.1204 - 1/8" Ferrule Nut</li> <li>INCLUDES FITTINGS</li> </ul>

### VALVE REPAIR KITS

<b>KT.2252</b>	Solenoid Valve	Aflas	2100A/ 2100B	Spade & WP	<ul style="list-style-type: none"> <li>• SL.2251 - Aflas Lip Seal</li> <li>• SP.2176 - .62" Compression Spring</li> </ul>	<ul style="list-style-type: none"> <li>• SL.2121 - Aflas Seal</li> <li>• OR.2339 - 024 Viton O-Ring</li> </ul>
<b>KT.2255</b>	Solenoid Valve	Viton	2100B	Spade & WP	<ul style="list-style-type: none"> <li>• SL.2254_C - Viton Lip Seal</li> <li>• SP.2176 - .62" Compression Spring</li> <li>• SL.2093 - Viton Seal</li> </ul>	<ul style="list-style-type: none"> <li>• OR.2339 - 024 Viton O-Ring</li> <li>• PLGR.6978 - Plunger With Viton Seat</li> <li>• SP.1979 - .62" Compression Spring</li> </ul>
<b>KT.2352</b>	Solenoid Valve	Viton	2500B	Spade & WP	<ul style="list-style-type: none"> <li>• SP.2315 - .75" Compression Spring</li> <li>• SL.2307 - Disc Washer with Viton</li> <li>• WSR.2363 - Teflon Washer</li> </ul>	<ul style="list-style-type: none"> <li>• OR.22314 - 028 Viton O-Ring</li> <li>• PLGR.2112 - Plunger With Aflas Seat</li> <li>• SP.1979 - .62" Compression Spring</li> </ul>
<b>KT.2445</b>	Motorized Valve	Viton	2402/2404		<ul style="list-style-type: none"> <li>• OR.2414 - 108 Viton O-Ring</li> </ul>	<ul style="list-style-type: none"> <li>• SL.2389 - Viton Face Seal</li> </ul>
<b>KT.2447</b>	Motorized Valve	Viton	2401/2403		<ul style="list-style-type: none"> <li>• OR.2414 - 108 Viton O-Ring</li> <li>• SL.2389 - Viton Face Seal</li> </ul>	<ul style="list-style-type: none"> <li>• PLGR.2112 - Plunger With Aflas Seat</li> <li>• SP.1979 - .62" Compression Spring</li> </ul>
<b>KT.2517</b>	Solenoid Valve	Viton	1999A	Spade & WP	<ul style="list-style-type: none"> <li>• SL.1974 - Viton Diaphragm Assembly</li> <li>• SP.1975_B - 1.1" Compression Spring</li> <li>• OR.1976 - 010 Viton O-Ring</li> </ul>	<ul style="list-style-type: none"> <li>• OR.1977 - 014 Viton O-Ring</li> <li>• PLGR.2240 - Plunger with Viton Seat</li> <li>• SP.1979 - .62" Compression Spring</li> </ul>
<b>KT.2518</b>	Solenoid Valve	Aflas	1999A	Spade & WP	<ul style="list-style-type: none"> <li>• SL.2109 - Aflas Diaphragm Assembly</li> <li>• SP.1975_B - 1.1" Compression Spring</li> <li>• OR.1976 - 010 Viton O-Ring</li> </ul>	<ul style="list-style-type: none"> <li>• OR.1977 - 014 Viton O-Ring</li> <li>• PLGR.2240 - Plunger with Aflas Seat</li> <li>• SP.1979 - .62" Compression Spring</li> </ul>
<b>KT.2532</b>	Motorized/Electric Ball Valve	Viton	2700 Series		<ul style="list-style-type: none"> <li>• OR.2527 - 012 NBR O-Ring</li> <li>• OR.2414 - 108 Viton O-Ring</li> <li>• MV.6472 - Machined Nylon Ball</li> </ul>	<ul style="list-style-type: none"> <li>• SL.2519 - Teflon Seal</li> <li>• OR.2528 - 217 Viton O-Ring</li> <li>• OR.2529 - 130 Viton O-Ring</li> </ul>
<b>KT.2604</b>	Solenoid Valve	Viton	2100C	Spade & WP	<ul style="list-style-type: none"> <li>• SP.2315 - .75" Compression Spring</li> <li>• SL.2307 - Disc Washer with Viton</li> </ul>	<ul style="list-style-type: none"> <li>• WSR.2363 - Teflon Washer</li> <li>• OR.2314 - 028 Viton O-Ring</li> </ul>
<b>KT.2671</b>	Solenoid Valve	Viton	2504B	WP	<ul style="list-style-type: none"> <li>• SP.2486 A - Compression Spring</li> <li>• PLGR.6484 - Plunger with Viton Seat</li> </ul>	<ul style="list-style-type: none"> <li>• OR.2314 - 028 Viton O-Ring</li> </ul>
<b>KT.2715</b>	Manifold Valve	Viton	2605/ 2606/ 2208/ 2209/2632/ 2634	WP	<ul style="list-style-type: none"> <li>• OR.2672 - 906 Viton O-Ring</li> <li>• PLGR.6978 - Plunger with Viton Seat</li> </ul>	<ul style="list-style-type: none"> <li>• SP.1979 - .62" Compression Spring</li> </ul>
<b>KT.2768</b>	Solenoid Valve	Viton	2500BHS	Spade & WP	<ul style="list-style-type: none"> <li>• SL.2307 - Disc Washer with Viton</li> <li>• OR.2314 - 028 Viton O-Ring</li> </ul>	<ul style="list-style-type: none"> <li>• WSR.2363 - Teflon Washer</li> <li>• SP.2670 - .62" Compression Spring</li> </ul>
<b>KT.2778</b>	Manual Valve	Viton	2750		<ul style="list-style-type: none"> <li>• OR.2414 - 108 Viton O-Ring</li> <li>• SP.2776 - .63" Compression Spring</li> <li>• WSR.2752 - Washer Seat Cup</li> </ul>	<ul style="list-style-type: none"> <li>• SL.2749 - Viton Washer Seat</li> <li>• SP.2777 - .625" Compression Spring</li> <li>• OR.2314 - 028 Viton O-Ring</li> </ul>

## VRBAS [VALVE, REGULATOR & BRACKET ASSEMBLIES]\*

### 1999A SERIES VALVES

**VRBA.2020** // 1 1999A Spade Valve with PR.1541B

**VRBA.2025** // 2 1999A Spade Valves with PR.1541B

**VRBA.2035** // 3 1999A Spade Valves with PR.1541B

### 2500 SERIES VALVES

**VRBA.2070** // 3 2502B Spade Valves with PR.1560B

**VRBA.2080** // 2 2502B Spade Valves with PR.1560B

**VRBA.2090** // 1 2502B Spade Valve with PR.1560B

**VRBA.2508** // 1 2500B Spade Valve with PR.1560B

**VRBA.2510** // 2 2500B Spade Valves with PR.1560B

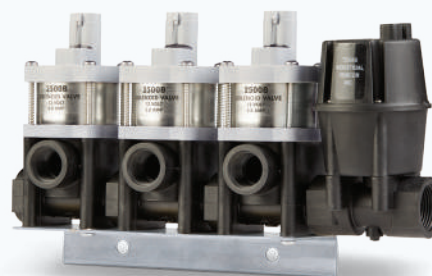
**VRBA.2512** // 3 2500B Spade Valves with PR.1560B

### 2100C SERIES VALVES

**VRBA.2175** // 1 2100C Spade Valve with PR.1560B

**VRBA.2185** // 2 2100C Spade Valves with PR.1560B

**VRBA.2195** // 3 2100C Spade Valves with PR.1560B



**WP VRBA**  
**VRBA.2512.WP**

## COILS



**WP COIL**  
**CL.2592.WP**

### 1.25" COILS AVAILABLE AS 12-VOLT

**CL.2686.WP** // WP Coil for 2204 Valves

**CL.2685A** // Spade Coil for 2210 Valves

**CL.2693.WP** // WP Coil for 2210 Valves

### 1.25" COILS AVAILABLE AS 12-VOLT, 24-VOLT OR 120-VOLT

**CL.2515A** // Spade Coil for 1999A & 2201A Valves

### 1.25" COILS AVAILABLE AS 12-VOLT OR 24-VOLT TIR E-CHIP™ COMPATIBLE

**CL.2520A.WP** // WP Coil for 1999A & 2201A Valves

**CL.2592.WP** // WP Coil for 2600 & 2200 Valves

### 1.25" COILS AVAILABLE AS 12-VOLT OR 24-VOLT TIR E-CHIP™ COMPATIBLE

**CL.2621** // Spade Coil for 2200 Valves

### 2" COILS AVAILABLE AS 12-VOLT

**CL.2831** // Spade Coil for 2100C Valves

**CL.2642** // Spade Coil for 2500B, 2501B, 2502B Valves

**CL.2565A.WP** // WP Coil for 2504B Valves

**CL.2563A** // Spade Coil for 3002A & 3012A Valves

**CL.2564A** // Spade Coil for 3008A & 3018A Valves

### 2" COILS AVAILABLE AS 12-VOLT

TIR E-CHIP™ COMPATIBLE

**CL.2845.WP** // WP Coil for 2100C Valves

**CL.2641.WP** // WP Coil for 2500B, 2501B, 2502B Valves

**CL.2566A.WP** // WP Coil for 3002A & 3012A Valves

**CL.2565A.WP** // WP Coil for 3008A & 3018A Valves

\*Additional VRBAs available with other Solenoid Valves upon request - contact TIR for more information

# ACCESSORIES

## CHEMICAL ISOLATORS



**CHEMICAL ISOLATOR KIT**  
**KT.2300**

### CHEMICAL ISOLATORS KEEP DANGEROUS CHEMICALS FROM ENTERING THE TRACTOR OR TRUCK CAB TO ENSURE OPERATOR SAFETY.

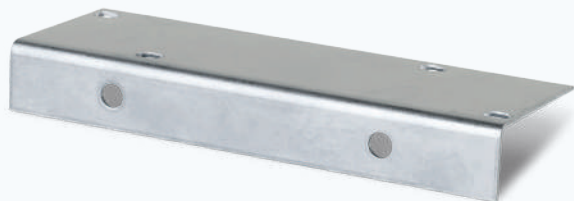
Made from glass-filled nylon and filled with non-toxic antifreeze, the Isolator dampens and protects your pressure gauge from corrosive chemicals. A large capacity assures accurate pressure readings up to a maximum pressure of 150 PSI (1034 kPa).

**ISO.2350** // Chemical Isolator with Mounting Bracket and .125" NPT Female threading without Tube Fitting

**ISO.2391** // Chemical Isolator with Mounting Bracket and .25" NPT Female threading without Tube Fitting

**KT.2300** // Chemical Isolator Kit with Mounting Bracket and Fittings for both .125" and .25" tubing

## MOUNTING BRACKETS



**MOUNTING BRACKET**  
**BKT.2151**

### 1999A SERIES VALVES

**BKT.1988** // Mounting Bracket for Single Valve

**BKT.1989** // Mounting Bracket for Double Valve Bank

**BKT.1990** // Mounting Bracket for Triple Valve Bank

### 2100C, 2500B & 2502B SERIES VALVES

**BKT.2148** // Mounting Bracket for Single Valve

**BKT.2149** // Mounting Bracket for Double Valve Bank

**BKT.2151** // Mounting Bracket for Triple Valve Bank

### 2400 & 2700 SERIES VALVES

**BKT.2452** // Mounting Bracket for Single Valve

**BKT.2453** // Mounting Bracket for Double Valve Bank

**BKT.2454** // Mounting Bracket for Triple Valve Bank

**BKT.2455** // Mounting Bracket for Quadruple Valve Bank

**BKT.2456** // Mounting Bracket for Quintuple Valve Bank



## CABLE ADAPTORS



**CABLE ADAPTOR**  
**ADPTR. 2615.WP.12**

**ADPTR.2615.WP.12** // 12" Blank End to Solenoid Valve Connection

**ADPTR.2615.WP.40** // 40" Blank End to Solenoid Valve Connection

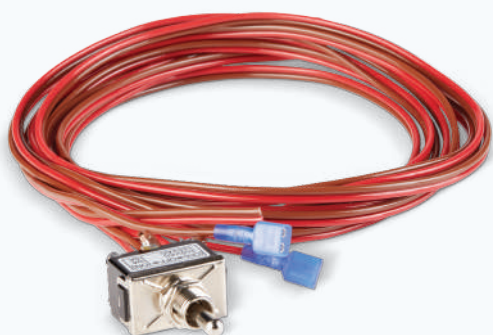


**CABLE ADAPTOR**  
**ADPTR.2616.12**

**ADPTR.2616.12** // 12" Spade to Weather Pack Solenoid Valve Connection

**ADPTR.2667.WP.12** // 12" Blank End to Weather Pack Motorized Valve Connection

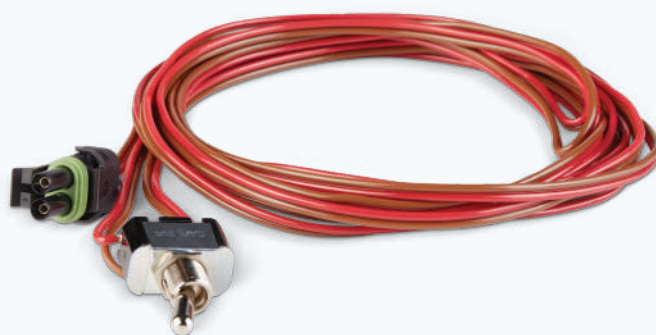
## SWITCH & WIRE



**SWITCH AND WIRE ASSEMBLY**  
**SW.1625**

Switch and wire assembly for use with PR.1541B or PR.1560B. Has 2-Way switch with 8' Power Cord and 8' Connector Wire\*

**SW.2114** // Switch and wire assembly for On/Off control of single spade Solenoid shut-off Valve. Comes with an 8' power cord and 8' wire with spade connectors\*



**SWITCH AND WIRE ASSEMBLY**  
**SW.2114.WP**

Switch and wire assembly for On/Off control of single WP Solenoid shut-off Valve. Comes with an 8' power cord and 8' wire with WP connectors\*

\*These use the same jumper wire - 16' total

# ACCESSORIES

## PRESSURE GAUGES

- PG.1331** // 2" 100 PSI Dry Pressure Gauge
- PG.1331L** // 2" 100 PSI Wet Pressure Gauge
- PG.1332L** // 2.5" 100 PSI Wet Pressure Gauge
- PG.1529** // 2.5" 30 PSI Dry Pressure Gauge
- PG.1633** // 2.5" 300 PSI Dry Pressure Gauge
- PG.1734** // 2.5" 160 PSI Dry Pressure Gauge
- PG.1734L** // 2.5" 160 PSI Wet Pressure Gauge
- PG.2328** // 2" 60 PSI Dry Pressure Gauge
- PG.2399** // 2" 200 PSI Dry Pressure Gauge
- PG.2399L** // 2" 200 PSI Wet Pressure Gauge
- PG.2421** // 2.5" 200 PSI Dry Pressure Gauge
- PG.2421L** // 2.5" 200 PSI Wet Pressure Gauge
- PG.2762** // 2.5" 100 PSI Dry Pressure Gauge

## PIPES



**PVC PIPE**  
**PIP.2651**

Texas Industrial Remcor PVC pipes are custom designed to serve as mounting hardware for our Manifold Nozzle Body Valves and Manifold On/Off Valves. With adaptations to fit any manifold quantity, these pipes have a .75" diameter and come in a variety of lengths with 3/8" drilled outlet holes and .5" NPT threading.

## CLAMPS

- CLMP.1945** // Speedy Clamp
- CLMP.1946** // Size "BB" Cable Clamp
- CLMP.1947** // Size "D" Cable Clamp
- CLMP.2718** // 2" Worm Screw Clamp

## PRESSURE ADAPTORS



**PRESSURE ADAPTOR**  
**PL.2152**

- PL.2152** // 2100, 2500 or 2502 Valves on the inlet side  
1999 Valve in the boom outlet
- ADPTR.2015** // 1" PA12 Pressure Adaptor with Hose Barb
- ADPTR.2153** // 2400 or 2700 series Motorized Valves on the inlet side

## PIPE PLUGS\*



**PIPE PLUG**  
**PLG.2697**

- PLG.2534 A** // PA12 Pipe Plug
- PLG.2697 A** // PA12 Pipe Plug
- PLG.5323** // Poly Pipe Plug
- PLG.5324** // Poly Pipe Plug
- PLG.5331** // MPT Poly Pipe Plug

\*These pieces are available to be printed.

- CLMP.2719** // 1" Worm Screw Clamp



---

# FOR MORE THAN 35 YEARS

---

Texas Industrial Remcor has been designing solenoid and motorized sprayer Valves and their systems to meet your needs. Whatever your fluid or air control application may be, agriculture, street cleaning, turf spraying or other purposes,

**WE'RE READY TO HELP YOU TAKE ON TODAY.**

## CONTACT US

CALL 254 982 4236 | FAX 254 982 4836

OR VISIT [SPRAYERVALVES.COM](http://SPRAYERVALVES.COM)







# LET'S TAKE ON TODAY

**VISIT**

**[SPRAYERVELVES.COM](http://SPRAYERVELVES.COM)**



P.O. BOX 872  
LITTLE RIVER ACADEMY, TX 76554  
PHONE: 254 982 4236  
FAX: 254 982 4836